

Book Quiz

Seasons come, Seasons Go TREE

Please use 'Present' for these slides as there are animations.

At home.. You will a grown up to help you read the words of the book.

At school. Your teacher will read the words of the book to you.



Listen to the story part by part and try to answer the questions.

Look at the pictures below. Which seasons do you think the tree represents?

winter



spring



summer



autumn



*In the forest, all is still,
Gripped by icy chill.
Owl sits watching in his tree....
No one sees as much as he.*



Question: Which season do you think is hidden by the orange box? How do you know? What clues are there in the picture and text?

Answer: Winter because there are no leaves on the tree and there is snow.

Can you spot the rhyming words?

*In the forest, all is still,
Gripped by winter's icy chill.*

*Owl sits watching in his tree....
No one sees as much as he.*

*Snow is melting all around,
Shoots are peeping through the
ground.
In the trees, young bear cubs play.
[orange box] cannot be far away.*



Question: Which season name is hidden by this orange box? Which season is coming next? What clues can you find in the pictures and text.

Answer: Spring because plant shoots are peeping up and bear cubs have been born.

*Blossom falls and leaves are
growing,
A gentle springtime breeze is
blowing.
Squirrels scamper here and
there,
Playful fox cubs sniff the air.*



Question: What signs of Spring are there on this page?

Answer: Blossom, leaves growing, baby animals.

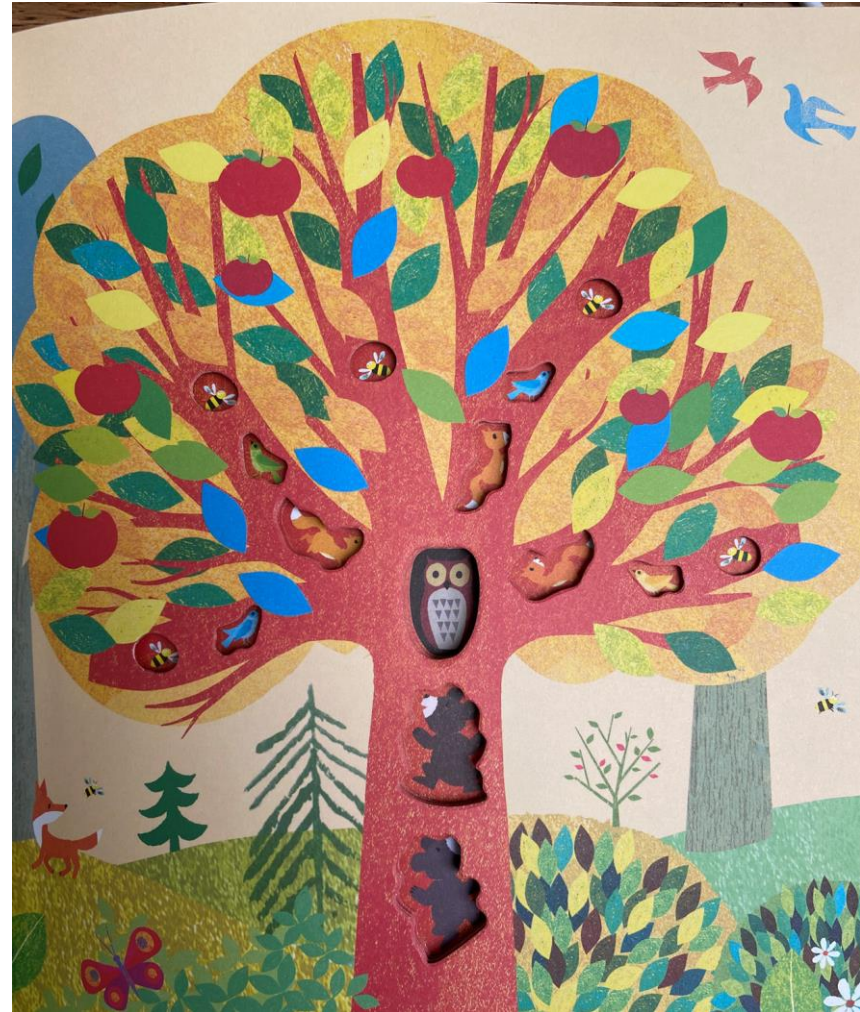
*Birds flit through the leafy bowers,
The forest is abloom with flowers.
Birds are singing, foxes play.
[Orange Box] is on its way.*



Question: Which season name is hidden by the orange box? Which season is coming next? What clues can you find in the text and picture?

Answer: There are leaves on the trees and there are flowers.

Now summer's here, the
sun is high,
Bees are humming in the
sky.
Juicy apples, ripe and
sweet,
Almost ready for you to eat.



*On a warm midsummer's
night.
All the stars are shining
bright.
The trees sway gently to
and fro,
Shimmering in the moonlit
glow.*



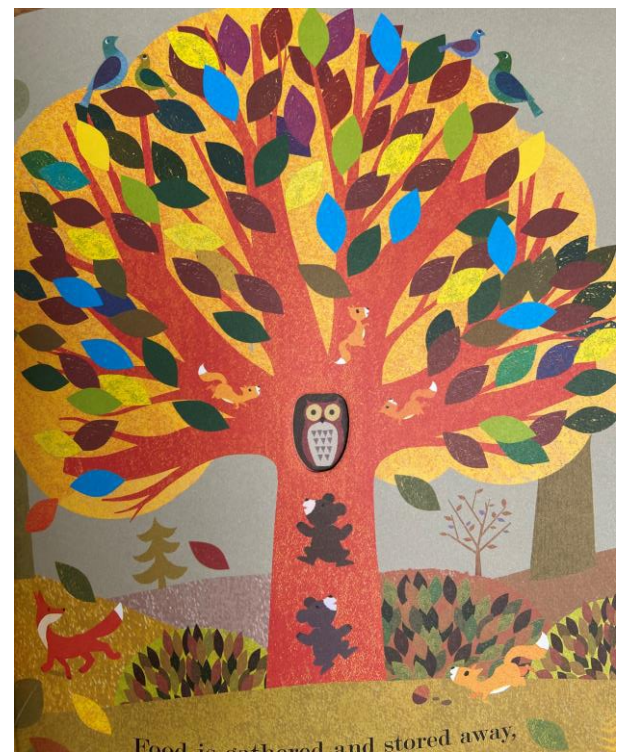
*Now it's cooler all around,
Apples tumble to the ground.
Grass is damp with morning
dew,
Clouds drift across the skies
of blue.*



leaves turn red and gold,
Days are warm, nights grow cold.
Food is gathered and stored away,
Ready for a winter's day.

Question: What season name is hidden by the orange box. How do you know? What clues are there in the text and picture?

Answer: The leaves are changing colour and the animals are storing food ready for winter.



*The cold north wind
begins to blow,
Animals shiver, it starts
to snow,
Time to shelter, find a
bed,
Prepare for winter
months ahead.*



*The forest floor is
snowy white.*

*In his tree, Owl sits
tight.*

*Deep midwinter's her
once more -
Wise Owl has seen it
all before.*



*It's silent now - no sounds
are heard,
Not a fox cub, not a bird.
The trees are still, the snow
lies deep.
All the forest has gone to
sleep.*



*The seasons have all
come and gone.
Snow has fallen, sun has
shone.
Owl sees the first new
buds appear,
And so begins another
year.*



Activity

Can you draw a tree in winter, autumn, spring and summer, You can use the templates on the last slide to help you if you want.

What are the changes?

What colours do you see in each season.

You might want to label your picture with the key vocabulary on the next page

winter	spring	summer	autumn
branches	green leaves	sunshine	red, gold, brown
snow	blossom	apples	owl, fox, bear, squirrel, bee

