

Colour Coding



This half term's unit in Computing is **Computer Art** and each week we will focus on a different artist and learn new skills to recreate each style on the Computer or other device you have at home. This week we will be learning about the artist Claude Monet. The PowerPoint gives you information and instructions to recreate Monet's style of art called 'Impressionism' where he draws the same scene again and again but uses different colours and shades to create different moods! You will find the children's usernames and passwords to access JiT in the back of their reading records. I have included step by step instructions on slides 12 and 13 to help complete this lesson.

Aim

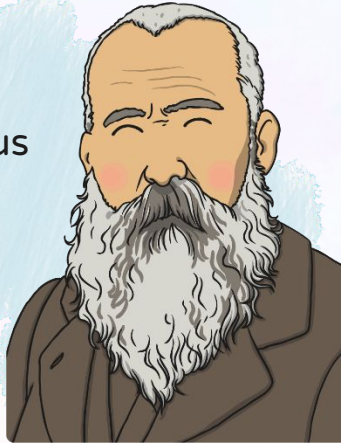
I can change the shade of a colour for effect.

Success Criteria

- I can produce lighter and darker shades of a colour.
- I can match colours to particular moods and emotions.
- I can make two versions of a piece of art using different shades.

Matching Monet

Claude Monet was a famous French artist who lived between 1840 and 1926.



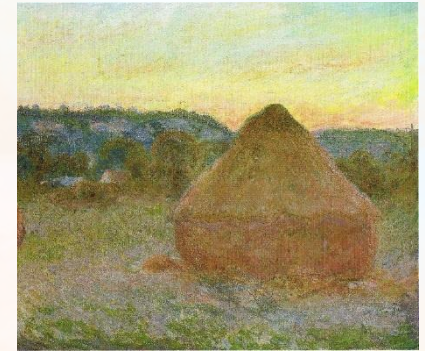
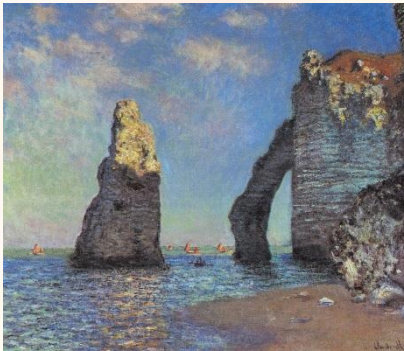
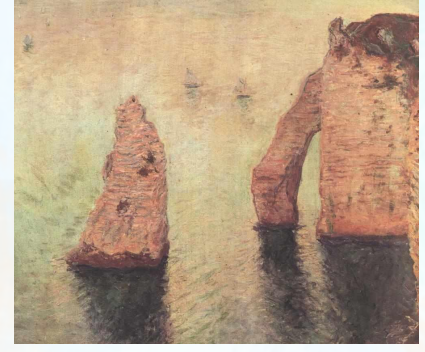
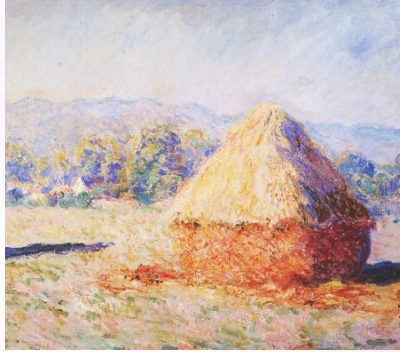
His style of painting is called 'Impressionism', which is actually named after one of his paintings!

He would draw the same scene again and again in order to show different seasons.



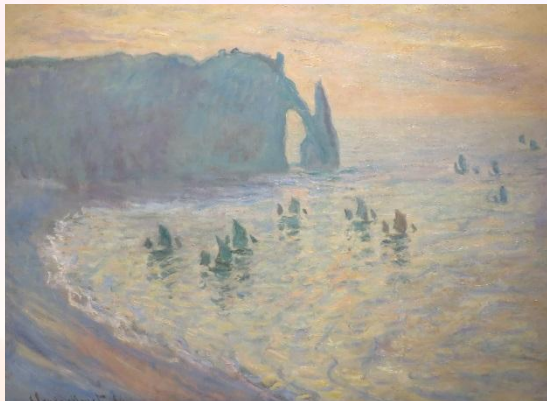
Matching Monet

Can you match up the pairs of paintings?



Matching Monet

Monet would use different colours to show the different seasons. This changed the way people felt about the places he was painting.



Look at these two paintings of the beach at Etretat in France.
How do the colours make you feel?
What do they make you think of?
Which picture makes you want to visit the most? Why?

Changing the Colour

You will be adding different colours to 2 pictures. Think about the difference you want them to show (day/night, hot/cold, happy/sad etc.)



You need to choose complementary colours to do this!



Which colours would you use to show warmth?



Which colours would you use to show sadness?

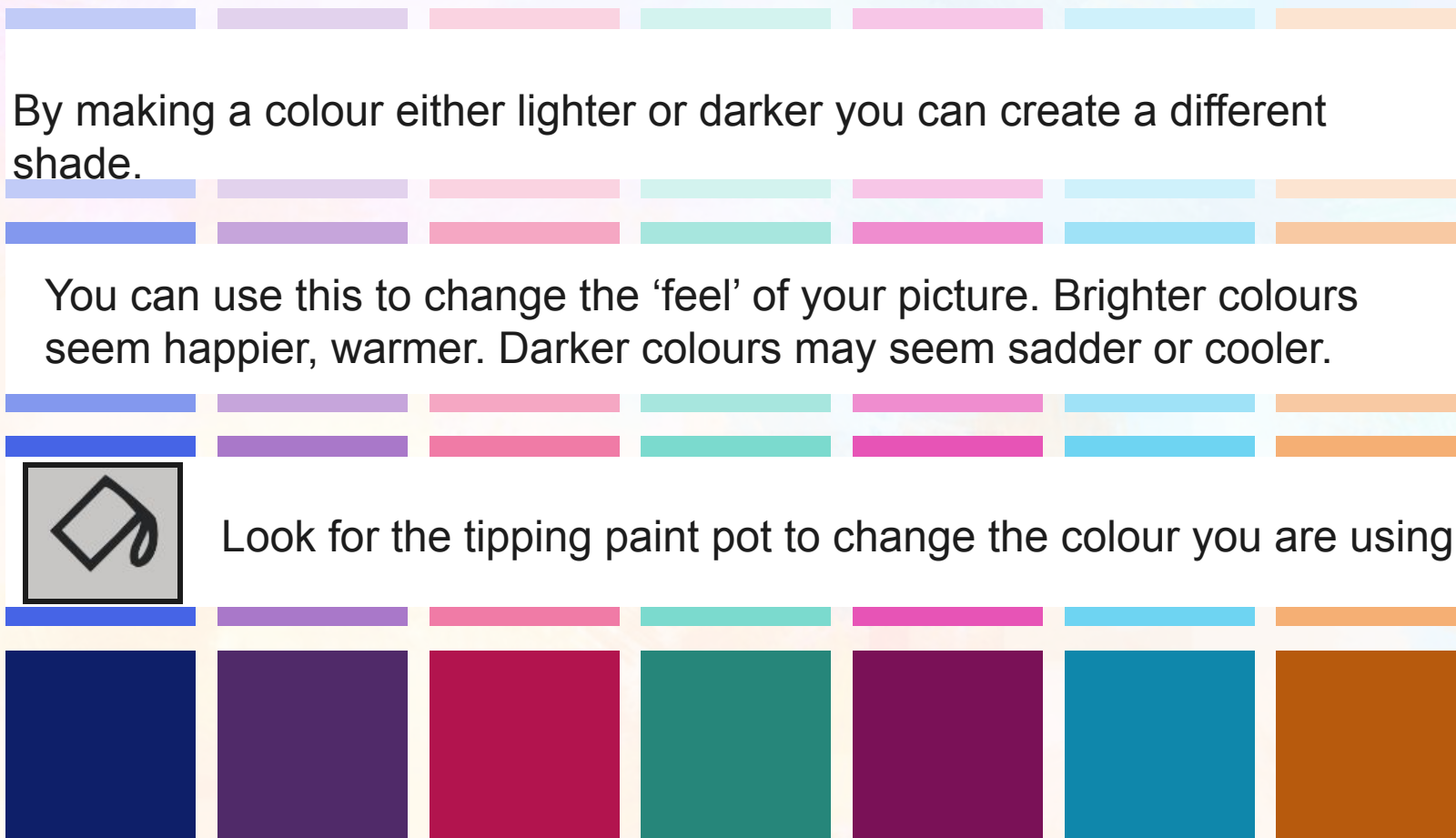
Changing the Shade

By making a colour either lighter or darker you can create a different shade.

You can use this to change the 'feel' of your picture. Brighter colours seem happier, warmer. Darker colours may seem sadder or cooler.

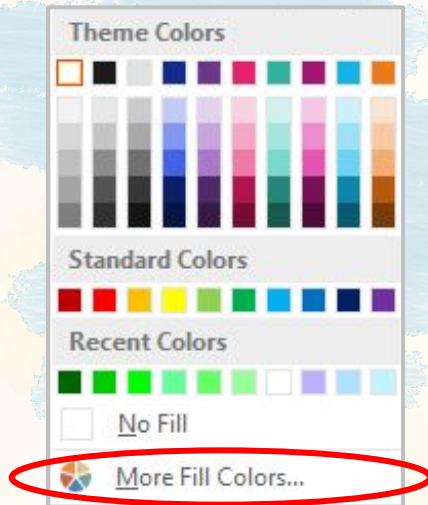


Look for the tipping paint pot to change the colour you are using.

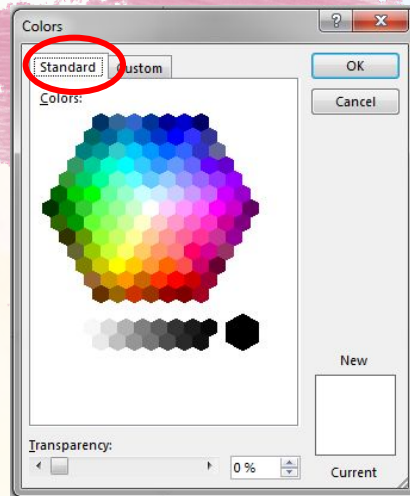


Changing the Shade

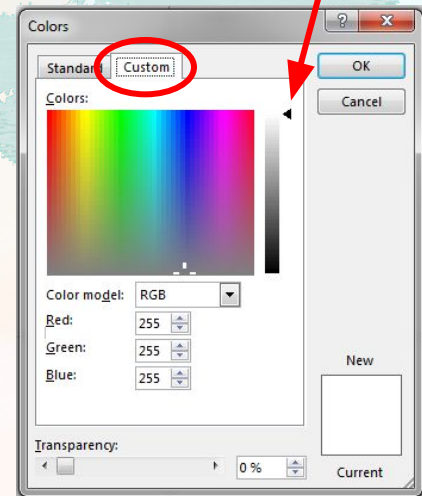
You can choose to have even more choices!



You may be given a range of different shades to use by the software you use.



You can even create your own shade by using the slider on the side of this box.

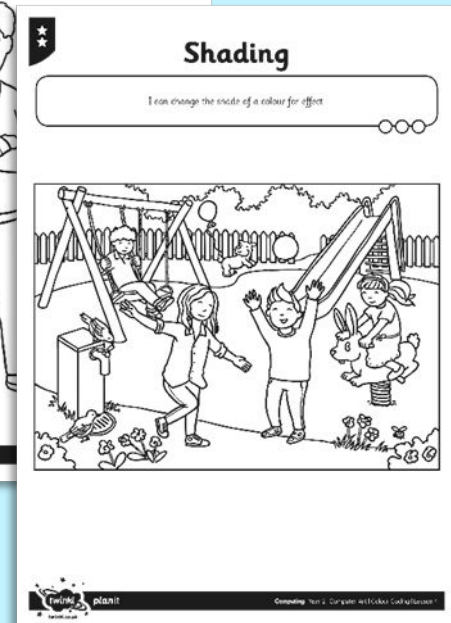
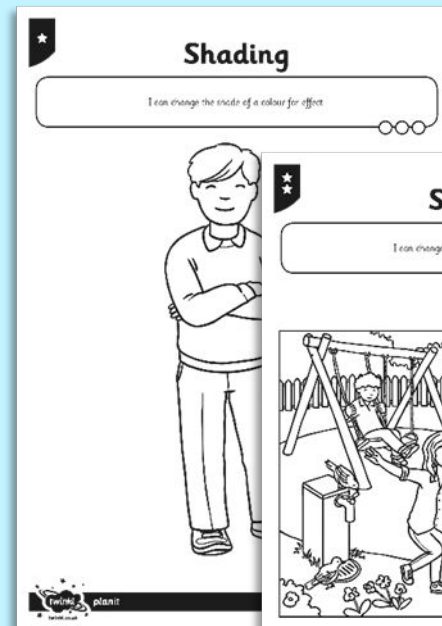
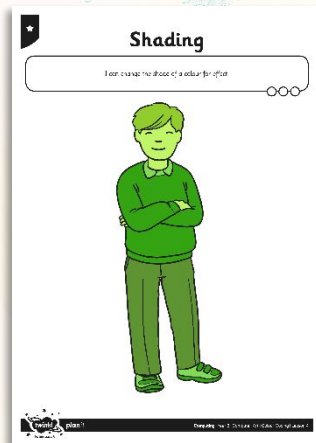


Seeing Double

Your challenge is to produce 2 versions of the same picture!

Use different complementary colours to produce a different mood or emotion in each version.

You could even just use lots of different shades of the same colour!



You may have applications like Microsoft Paint on your device or you could use JiT through your LGFL account which the children are familiar with using at school.



You will find children's usernames and passwords to access JiT stuck in the back of their reading records. Please see the next slide for instructions.


Name:

Username:

Password:

The image shows a login form for the Paint application. It includes fields for Name, Username, and Password, each with a keyboard icon below it. To the right of the form is a preview of the Paint application window, which shows a blank canvas and a toolbar with various drawing tools.

Here are some prompts the children follow at school:

1. Turn your computer and screen on. 

2. Log on

3. Click on the Internet Icon - Chrome 

4. www.lgfl.net



5. Click on 'Login'



6. Type in your Username and Password and Enter

Please enter your USO username and password, then click the Login button.

Username (e.g. jsmith123)

Password

7. Type 'jit' in the search bar.



8. Click on the Icon for JiT



JiT - j2e Infant Tools
The EYFS tools from the makers of the j2e Tool Suite

9. Launch Resource

LAUNCH RESOURCE

www.j2launch.lgfl.net

10. Normal USO Login



Normal USO Login

11. Click on the JiT5 Icon



1. Make sure you are on 'paint'

2. This options box will appear.

4. Click on the world icon 'Google search'

3. Click on 'pictures'



6. type in 'colouring in' and click search

5. Click on the 'line art' icon

7. You can scroll and select an image of your choice.

write paint turtle chart picto

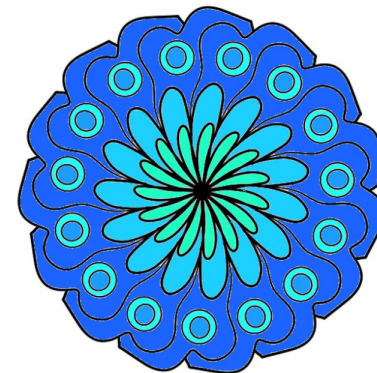
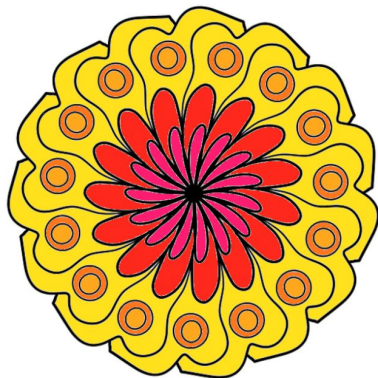
New

Save

Choose the jug/fill tool

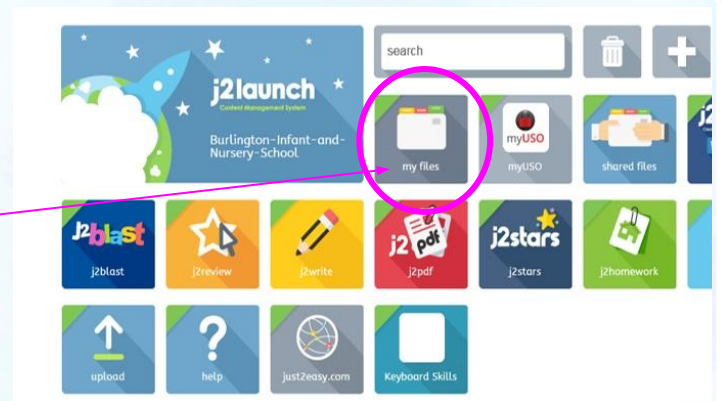
Click on this pipette icon to reveal more colours/shades

Once you've saved your first image click 'new' and repeat the process again in different colours.



What Contrast Can You See?

If you **saved** both of your pieces of work you will find them in 'my files'.



Ask somebody to look at your different pictures – can they tell what contrast (difference) you have produced in your artworks?

Which one do they and you like the best? Why?

Can they tell what moods or emotions are being shown in each picture?

Aim



I can change the shade of a colour for effect.

Success Criteria

- I can produce lighter and darker shades of a colour.
- I can match colours to particular moods and emotions.
- I can make two versions of a piece of art using different shades.