



Computing

Computer Art

Pixel Pointillism



Aim

I can create computer art.

Success Criteria

- I can use a computer software program to recreate art.
- I can change the colour and size of the dots.

Introducing Pointillism

What is Pointillism?

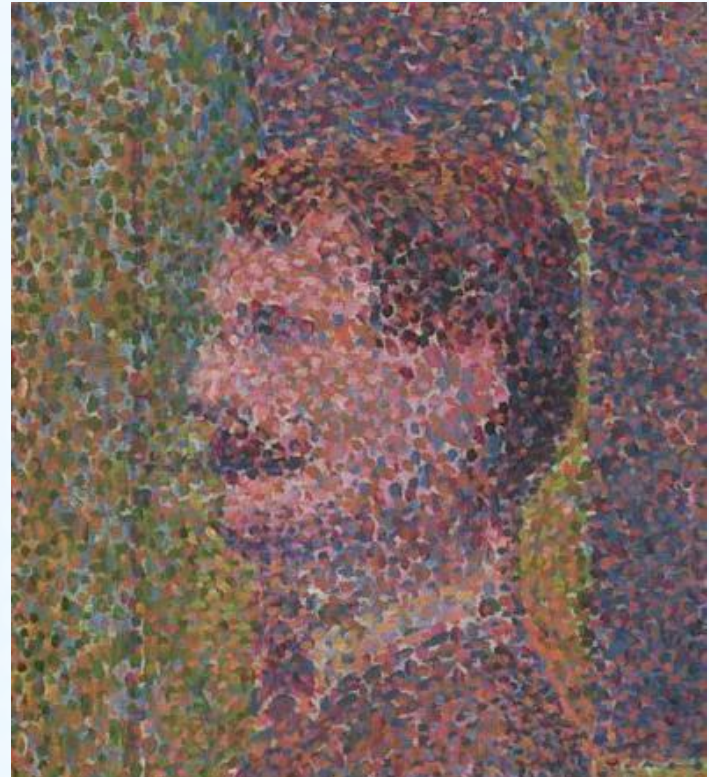
Pointillism is a type of painting that makes a picture using lots of colourful dots.

The first artists started to use it in the 1880s.

Close up, it can look messy and can be difficult to tell what the picture is of.

If you look at it from a distance, your mind blends the different colour dots together to form a clear picture – clever!

Modern day televisions and screens use the same technique to make all the different colours you see on them.



La Parade by Georges Seurat

Introducing Pointillism

Georges Seurat

Georges Seurat was a French painter who lived between 1859 and 1891.

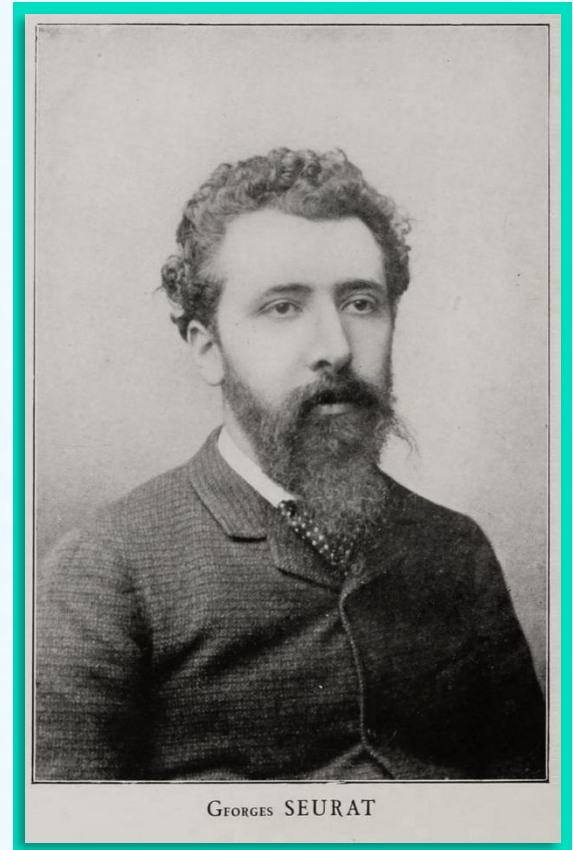


He went to some different art schools where he learnt to paint in a traditional manner.

He tried different styles of painting, but some people did not like it.

He spent two years producing his famous pointillist painting: *A Sunday Afternoon on the Island of La Grande Jatte* (1884-85).

[Click on the image of Seurat to see his painting.](#)



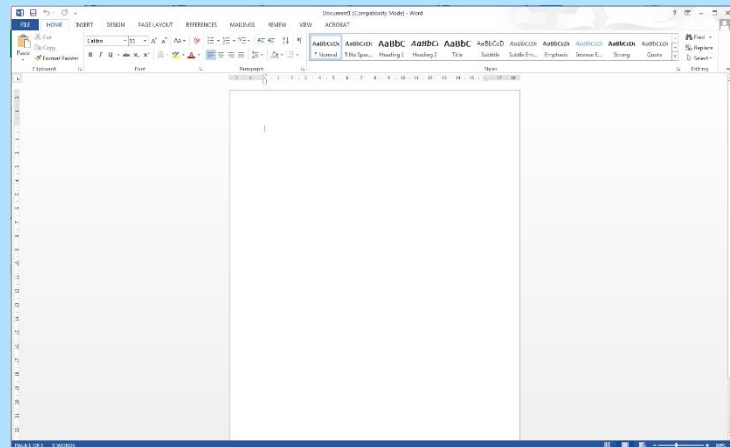


Creating Computer Art

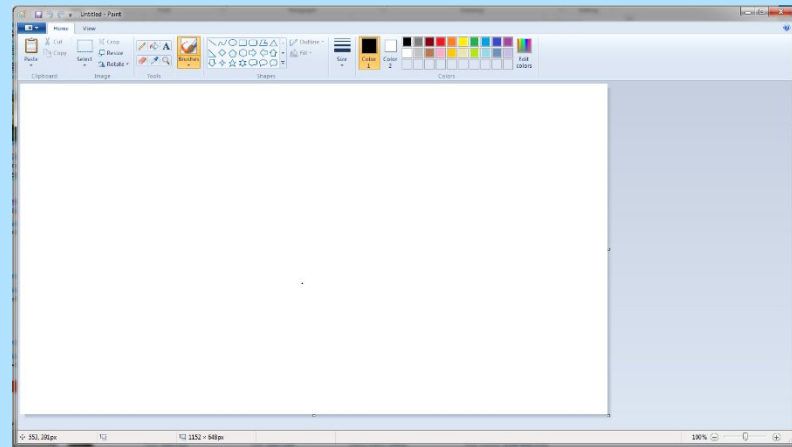
Have you created art using a computer before?

Which program or app did you use? Why?

MS Word



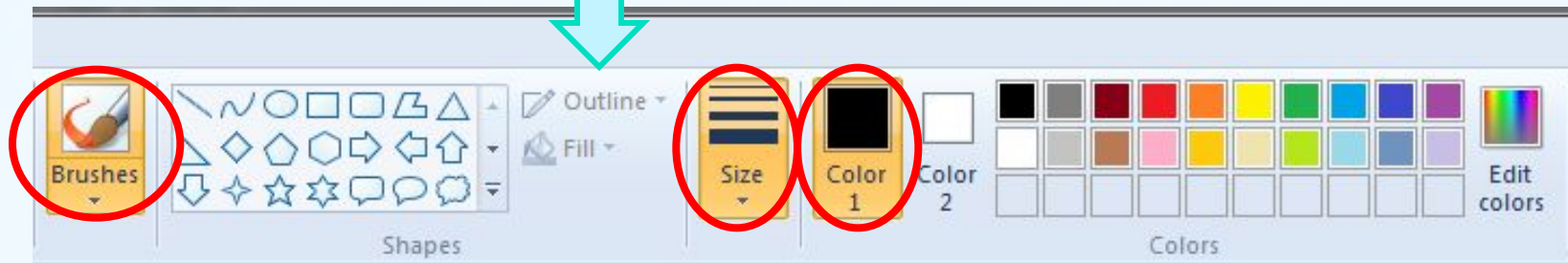
MS Paint



Which of these programs can we use for creating art?
Which is best and why?

Which Tools?

This is what we call a toolbar.



It shows you what tool you are using and any important information (like size or colour).

For this lesson you will need keep the brushes selection the same as it is the only one that allows you to make dots.

You will need to select the right colour for Colour 1 - Colour 2 should stay white.

You will need to select the size of the dot you will use.

Producing Pointillism

Now it's your turn to produce a piece of pointillism!

Look at the picture you have been given.

Can you use dots on the computer to recreate the picture?

Things to think about:

- What colours are you going to use — remember that Seurat used lots of colours.
- Are you just making dots? Make sure you click for each one and then you don't end up with lines. Change the size of the dot as necessary.
- Take your time and make sure your work is completely dotty!

Recreate Pointillism

I can use a specific computer skill to reproduce a style of art.

Use the computer program you have chosen to recreate the picture shown using dots.

Make sure you use bright colours. Remember to click the mouse quickly to make your dots. Be careful - holding the button down will leave you with many lines.



Recreate Pointillism

I can use a specific computer skill to reproduce a style of art.

Use the computer program you have chosen to recreate the picture shown using dots.

Make sure you use bright colours. Remember to click the mouse quickly to make your dots. Be careful - holding the button down will leave you with many lines.



Recreate Pointillism

I can use a specific computer skill to reproduce a style of art.

Use the computer program you have chosen to recreate the picture shown using dots.

Make sure you use bright colours. Remember to click the mouse quickly to make your dots. Be careful - holding the button down will leave you with many lines.



Quality Standard

© 2020 twinkl.com. All rights reserved. twinkl.com is a registered trademark of twinkl.com.

twinkl.com

You may have applications like Microsoft Paint on your device or you could use JiT through your LGFL account which the children are familiar with using at school.



You will find children's usernames and passwords to access JiT stuck in the back of their reading records. Please see the next slide for instructions.

Import
Brush/Fill
Colour
Brush Size

Name:

Username:


Q	W	E	R	T	Y	U	I	O	P	Backspace
A	S	D	F	G	H	J	K	L	;	Enter
Z	X	C	V	B	N	M	,	.	/	Ctrl
Ctrl	Alt								Alt	Ctrl

Password:

Q	W	E	R	T	Y	U	I	O	P	Backspace
A	S	D	F	G	H	J	K	L	;	Enter
Z	X	C	V	B	N	M	,	.	/	Ctrl
Ctrl	Alt								Alt	Ctrl



Here are some prompts the children follow at school:

1. Turn your computer and screen on. 

2. Log on

3. Click on the Internet Icon - Chrome 

4. www.lgfl.net



5. Click on 'Login'



6. Type in your Username and Password and Enter

Please enter your USO username and password, then click the Login button.

Username (e.g. jsmith123)

Password

7. Type 'jit' in the search bar.



8. Click on the Icon for JiT



JiT - j2e Infant Tools
The EYFS tools from the makers of the j2e Tool Suite

9. Launch Resource

LAUNCH RESOURCE

www.j2launch.lgfl.net →

10. Normal USO Login

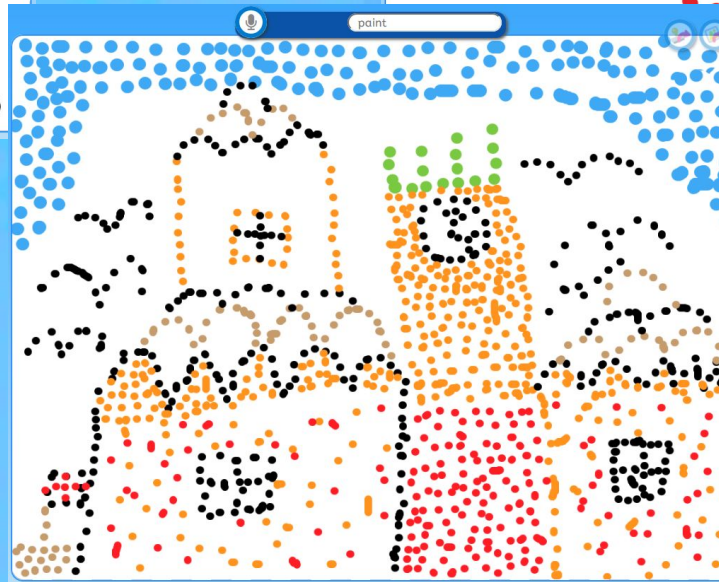
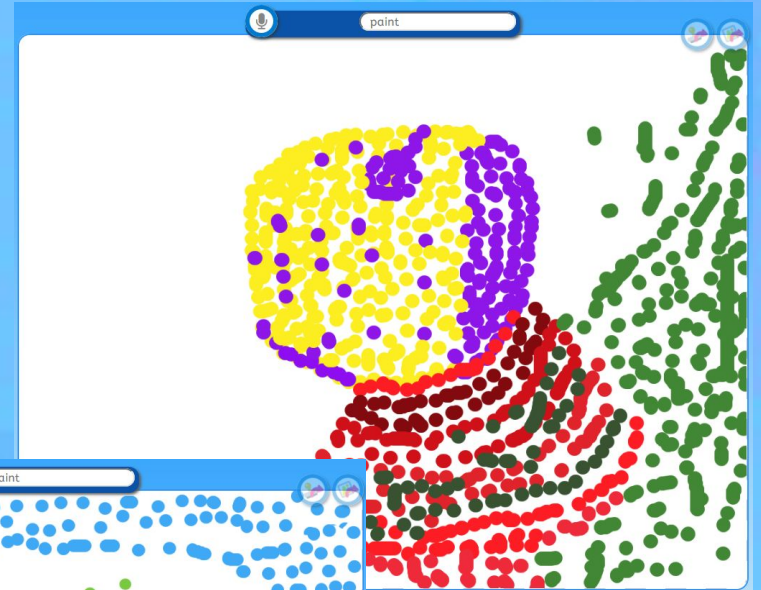


Normal USO Login

11. Click on the JiT5 Icon



Here are some examples from children last year:



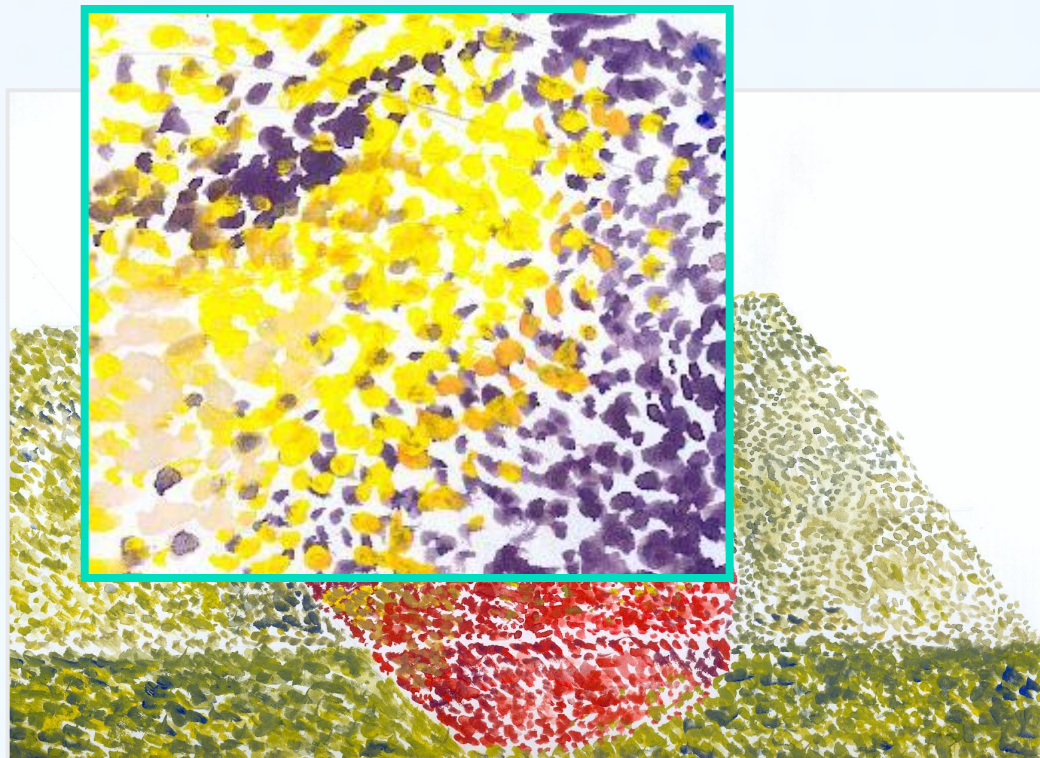
What Is It?

Here are some close up images of some pointillist pictures. Can you work out what the image is of?



What Is It?

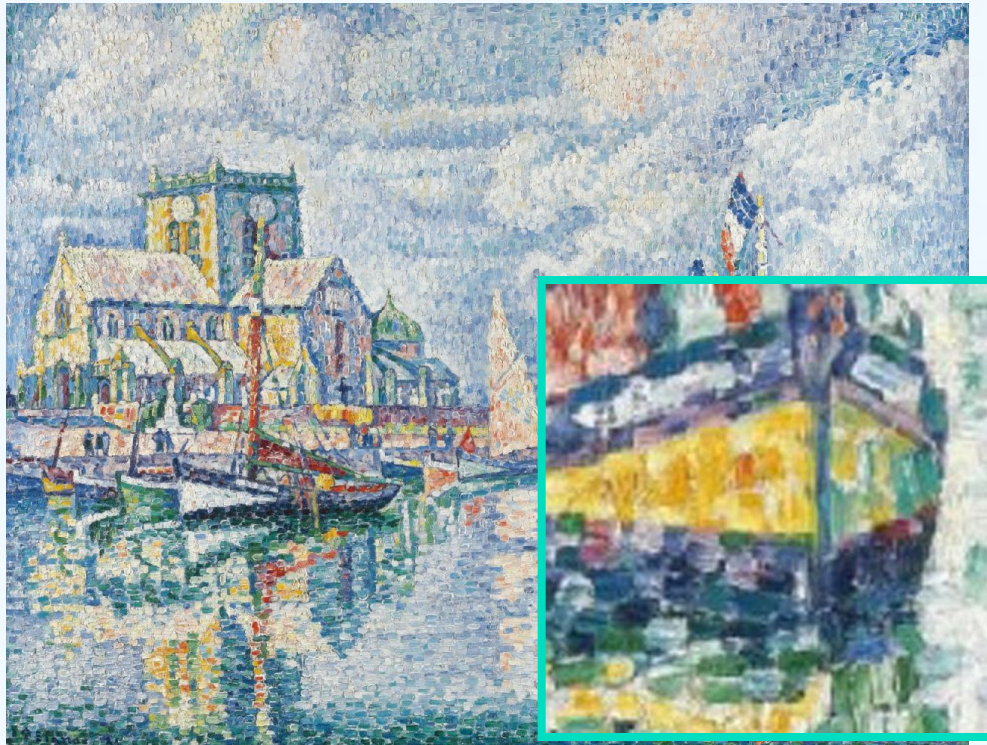
Here are some close up images of some pointillist pictures. Can you work out what the image is of?



ATtribution - Photo courtesy of mustafa kurtuldu (@flickr.com) - granted under creative commons licence - attribution

What Is It?

Here are some close up images of some pointillist pictures. Can you work out what the image is of?



ATtribution - Photo courtesy of Cea (@flickr.com) - granted under creative commons licence - attribution

Aim



I can create computer art.

Success Criteria

- I can use a computer software program to recreate art.
- I can change the colour and size of the dots.