



Burlington
Infant & Nursery School
INSPIRATION, RESILIENCE, EXCELLENCE



Reception

September 2025





Mrs Yay-Walker
Headteacher

Mrs Docwra



Senior Leadership Team



Mrs McEvoy

Mrs Easty



Safeguarding

- It is our duty to safeguard and ensure the wellbeing of all children at the school.
- We will teach children about who to talk to when they feel worried about anything - 'safe adults'.
- We are here to support families...
- 4 safeguarding officers:

Mrs Docwra



Mrs Yay-Walker



Mrs Easty



Mrs McEvoy



How can we help?

- We pride ourselves on being a very supportive school.
- We can help with managing behaviour at home: setting routines, support with attendance and punctuality, health and wellbeing.
- If there are any concerns around your child, our safeguarding officers will liaise with other professionals to make sure that you and your child can access appropriate support and guidance.



Our Expectations: Attendance and Punctuality

- **Good attendance and punctuality - consistency for children's development and learning**
- Morning registration
- **Authorised absence - sickness, hospital/therapy appointments, exceptional circumstances**
- **Contact the office** on the first day of absence to notify us of sickness absence, 1 month in advance for all other absence
- **Unauthorised absence - holidays and trips, birthdays**
- **Fixed Penalty Notices - for unauthorised absences of 5 days or more**

Mrs. Davies
Hedgehogs Class



Miss Moore
Rabbits Class



Reception Team

Miss Flower
Squirrels Class



Mrs. Drake
Foxes Class





Reception at Burlington



- We are a happy and vibrant community school
- Diversity and individuality are celebrated.
- We are passionate about nurturing and inspiring the children.
- We encourage creativity, build on individual strengths and value the importance of happiness and well-being.
- We want all children to come to school excited to learn.
- We support each child to make progress in all areas of the curriculum.

**What does your child need to be
ready for school?**



Uniform

- School jumper or cardigan with logo
- White polo top
- Grey trousers/shorts/skirt/pinafore dress
- Sensible black shoes (no trainers)
- Book Bag with a keyring



Uniform

- PE shorts and white t-shirt



- Rectangular lunch box
(if having packed lunch)



Please ensure **EVERYTHING** is named!

Transition

- Play and Stay session for external children alongside home visits.
An exciting and positive time for children to see classroom
- Reception team to visit internal Nursery children
- Staggered start in September
- Build up to a full day



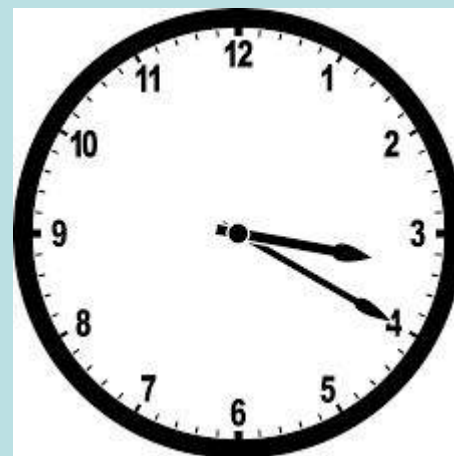
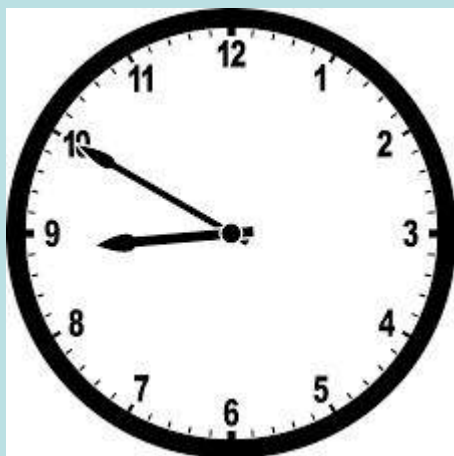
How Can You Help?

- You need to help your child to be ready to start school.
- They need to try to do the following things for themselves

- Children will need to be able to put on their own jumpers, coats and shoes and also be able to take them off



- Please be on time.
- School starts at 8:50am. 3:20pm collection.



- Make sure your child has a good breakfast
- Start morning routines early on

- *Getting ready for bed by 7pm*



- *A good night's sleep = a good day at school!*

An average day in Reception

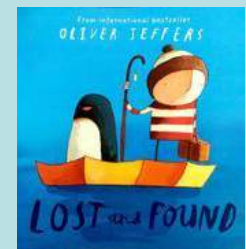
Morning

- Welcome time
- Phonics
- Learning time (inside +out)
- Fruit
- Learning time (inside +out)
- Story
- Lunch



Afternoon

- Maths
- Learning time (inside +out)
- Milk
- Story
- Home time



Our Expectations

- Follow class routines



- Share fruit and milk and listen to a story



- Go to the toilet by themselves



- Kind hands, kind feet



- Eat fruit and lunch - be able to feed themselves
Practise using a knife and fork



Lunch

- We are a healthy school and we expect the children to bring healthy lunches
- All primary children are entitled to free school lunches - 95% children choose school lunch
- School dinners

Children sit as a class in the
Small Hall and enjoy lunch together
Teacher and NN join for first week too!
Lunch supervisors for each class



Packed lunch

- Please give your child healthy familiar food

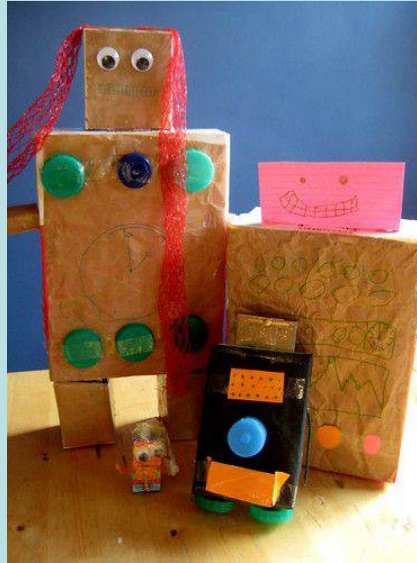


Curriculum

- We will have regular workshops to support you with helping your child at home- Phonics, Reading and maths workshops
- We use the Little wandle phonics scheme.
- Learning through play and by having fun!
- Outdoor learning all year round in the playground, school environment and local trips



- Familiar activities



- Inside and outside





Woodland School



- Once the children have settled we start Woodland School after the Autumn half term
- Children are asked to wear PE kits for the day
- We explore the Woodland areas, having lots of fun and sometimes getting a little messy!



Making progress in Reception

- Getting to know your child
- Importance of home/school communication
- Observing children using Birth to 5 Matters and Early Learning Goals at the end of the school year
- Completing statutory Reception Baseline Assessments
- Parent consultations
- End of year reports

Supporting learning at home

- Talk with your child- ask questions
- Visit libraries and playgroups over Summer if possible
- Share books and talk about them
- Sing songs and rhymes
- Play games
- Paint and draw pictures
- Enjoy the great outdoors!

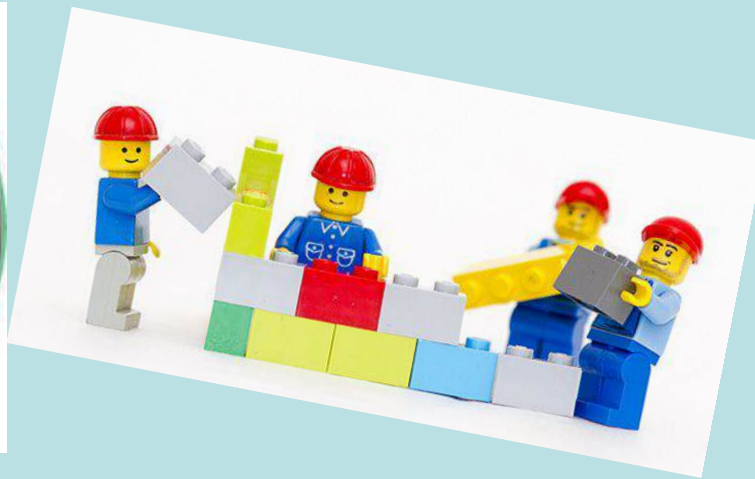


Get your child ready for mark making and writing

We learn to write in lower case not UPPER CASE!



playdough
scissors
tweezers
small construction
pencil grip

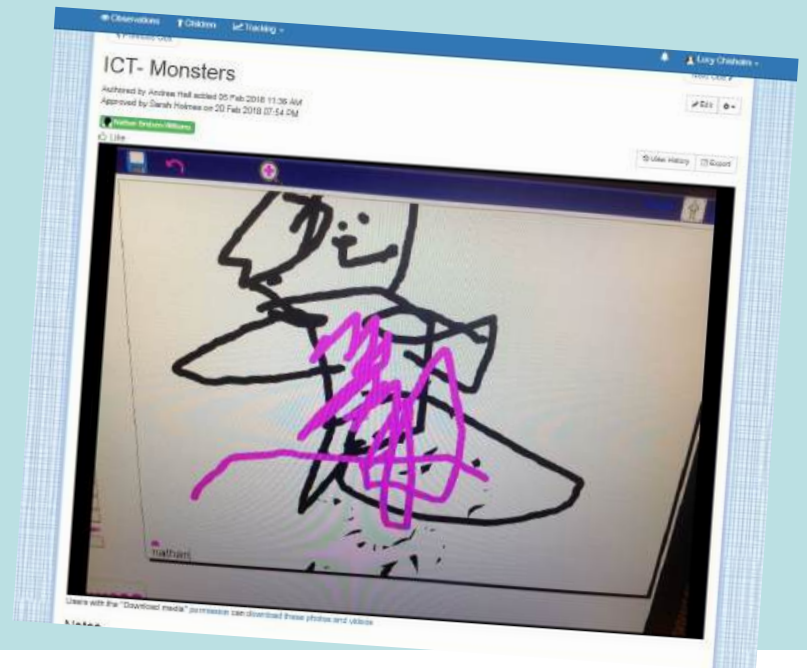




Tapestry



- Tapestry is our online Learning Journey
- Fantastic way to see your child's learning
- You will be asked to 'sign up' in September
- Able to add observations at home





Acorns



- **Acorns Breakfast and After-school club**
- **Breakfast club is open from 7.30am weekdays during term time.**
- **After school club is open until 6pm weekdays during term time.**

More information was included in email packs sent by Admissions Officer in April and it is also available on the school website.

School Rules

- No scooting/cycling anywhere on school site.
- No pets anywhere on school site.
- No climbing on play equipment before or after school
- No smoking/vaping anywhere on school site.
- No mobile phones at drop off/pick up.
- Photo opportunity at the end of performances - no social media.
- Parents and Visitors Code of Conduct.



Transition / Admission Dates

Lunch Tasting Session - Friday 4 July at 9am

FOR EXTERNAL CHILDREN:

Home Visits: 26 June to 10 July

Stay and Play: Thurs 10 July, 1.30pm

FOR INTERNAL CHILDREN:

Reception team visit in Nursery

Nursery children visit their classrooms

Start Dates from Wednesday 3 September onwards

If you don't know these dates for your child, or have any questions, please see Navita at the back of the hall after this talk.



Burlington
Infant & Nursery School
INSPIRATION, RESILIENCE, EXCELLENCE



Thank you